



Case Study: HSBC Headquarters, Hong Kong

Client: The Hongkong and Shanghai Banking Corporation Limited (HSBC)



Project

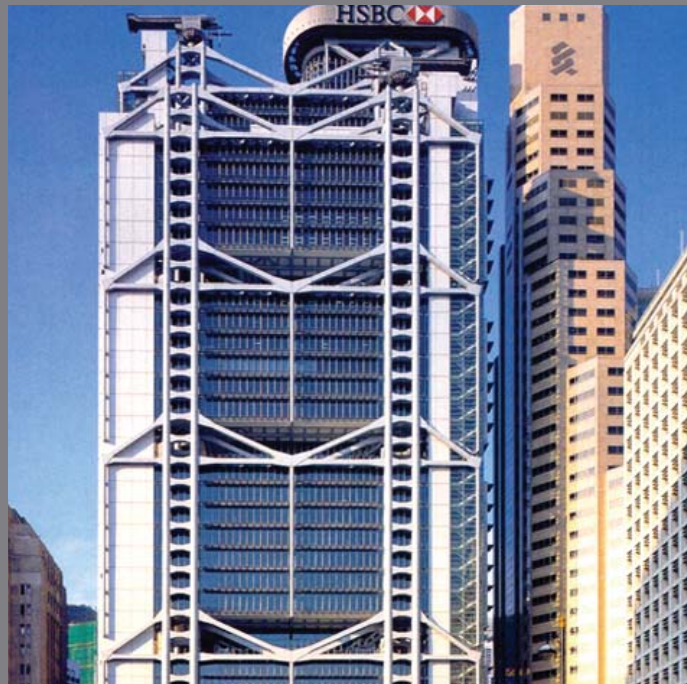
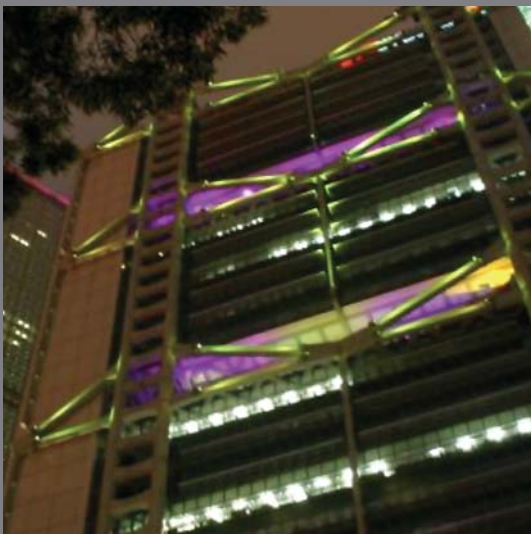
Designed by Foster Associates, the HKD5,227 million headquarters of HSBC is one of the most spectacular skyscrapers in Hong Kong's beautiful skyline, with a gross floor area of 99,171 m². The structure is 47-storey high (180 meters) and known for its innovative construction, boasting the absence of an internal support structure. The building is largely pre-fabricated, with materials arriving on site from all around the world. In 2003, the exterior lighting of the building became part of the Hong Kong Tourism Board's Symphony of Lights.

Our role

Rider Levett Bucknall provided pre-contract and post-contract services. The scope of work included cost planning and estimating, tendering and contracting, cost controlling and administration as well as final account.

Client benefits

The HSBC Headquarters departs from the traditional system. As a result of the special design and the fact that most components of the building were custom built, it is one of the most complex projects in Hong Kong. The Bank was delighted with our ability to control the costs on this expensive project.



Oceania

t. +61 2 9922 2277
e. enquiries@oceania.rlb.com

EMEA

t. +44 20 7398 8300
e. enquiries@emea.rlb.com

Asia

t. +852 2823 1823
e. enquiries@asia.rlb.com

Americas

t. +1 602 443 4848
e. enquiries@americas.rlb.com