



Case Study: Venetian Macau
Client: Venetian Cotai Limited



Project

Parcel I of the Venetian Macau Casino Resort Hotel Complex is the largest single resort development in Macau and includes a casino, retail space, a 40-storey hotel with 3,000 guest rooms and a number of function centres. Covering an area of 1 million sqm, it is big enough to contain three canals with traditional Italian gondolas within the shopping arcade.

Our role

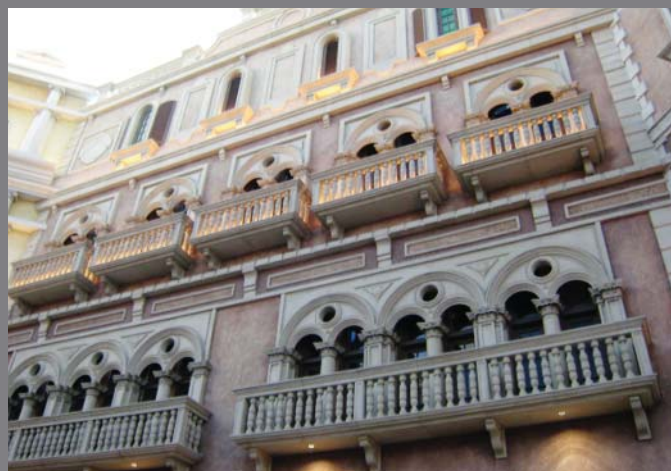
On this project, Rider Levett Bucknall has provided full cost consultancy services to the client. Our involvement began at the first issuance of the preliminary conceptual design drawings of the development including the reclamation of land on existing sea along the existing Cotai Strip Road up to the completion of the development with a fast track construction period in about 3 years (November 2004 to August 2007).

Client benefits

Rider Levett Bucknall worked with Venetian Cotai Limited, the construction manager, consultants and contractors to ensure that the development was completed within an extremely tight construction period.

Rider Levett Bucknall provided cost studies, value engineering, estimation on change requests and contractual advice to help the client minimise contractual disputes raised by various contractors.

Venetian has continued to use Rider Levett Bucknall as the quantity surveyor for the mega hotel and casino resort complex in Singapore.



Oceania

t. +61 2 9922 2277
e. enquiries@oceania.rlb.com

EMEA

t. +44 20 7398 8300
e. enquiries@emea.rlb.com

Asia

t. +852 2823 1823
e. enquiries@asia.rlb.com

Americas

t. +1 602 443 4848
e. enquiries@americas.rlb.com